

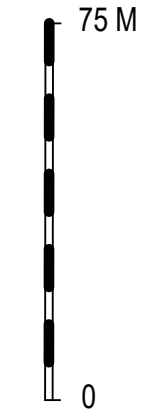
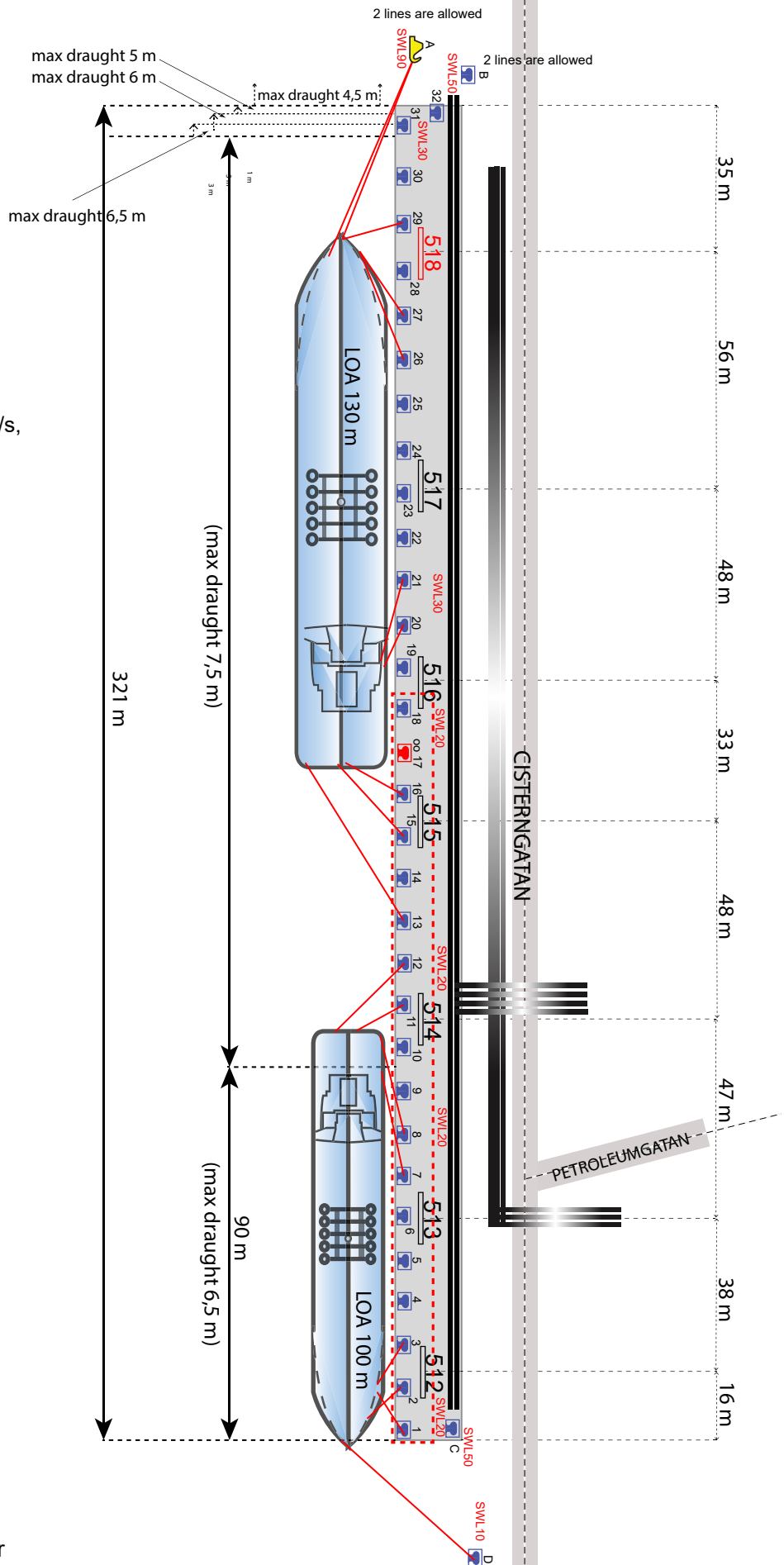
BERTH 512-518

| | |
|------------------------|-------|
| MAX DRAUGHT (512-514): | 6,5 M |
| MAX DRAUGHT (514-518): | 7,5 M |
| MAX LOA (516-518): | 130 M |
| MAX LOA (515): | 125 M |
| MAX LOA (512-514): | 100 M |
| UKC: | 0,5 M |
| MIN PARALLELL BODY: | N/A |
| MIN FREEBOARD: | N/A |
| QUAY DECK HEIGHT: | 2 M |

No vessel alongside berth 512-518 when the sustained wind speed exceeds 22 m/s, all wind directions.

For berths 515-518, no vessels with LOA > 100 m alongside when the sustained wind speed exceeds 18 m/s, all wind directions”.

Only one mooring line at each bollard is permitted except bollard A and B.



- Loading arm No.
- VRU Connection
- BOLLARD
- HOOK
- CoM** CENTRE of MANIFOLD
- Bollard in red = Out of order

| | | | | | | | |
|--|-----------------|---|------------------|-------|--|------------------------------------|-------------------|
| | BERTH DIRECTION | MOORING PLAN SKARVIK BERTH 512-518 | | | | BERTH / DRAWING NO BERTH512-518 | APPROVED BY EW |
| | 111° / 291° | REV. DATE 2023-10-20 | DRAWN MAFLOBE | SCALE | | | |

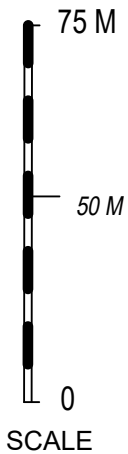
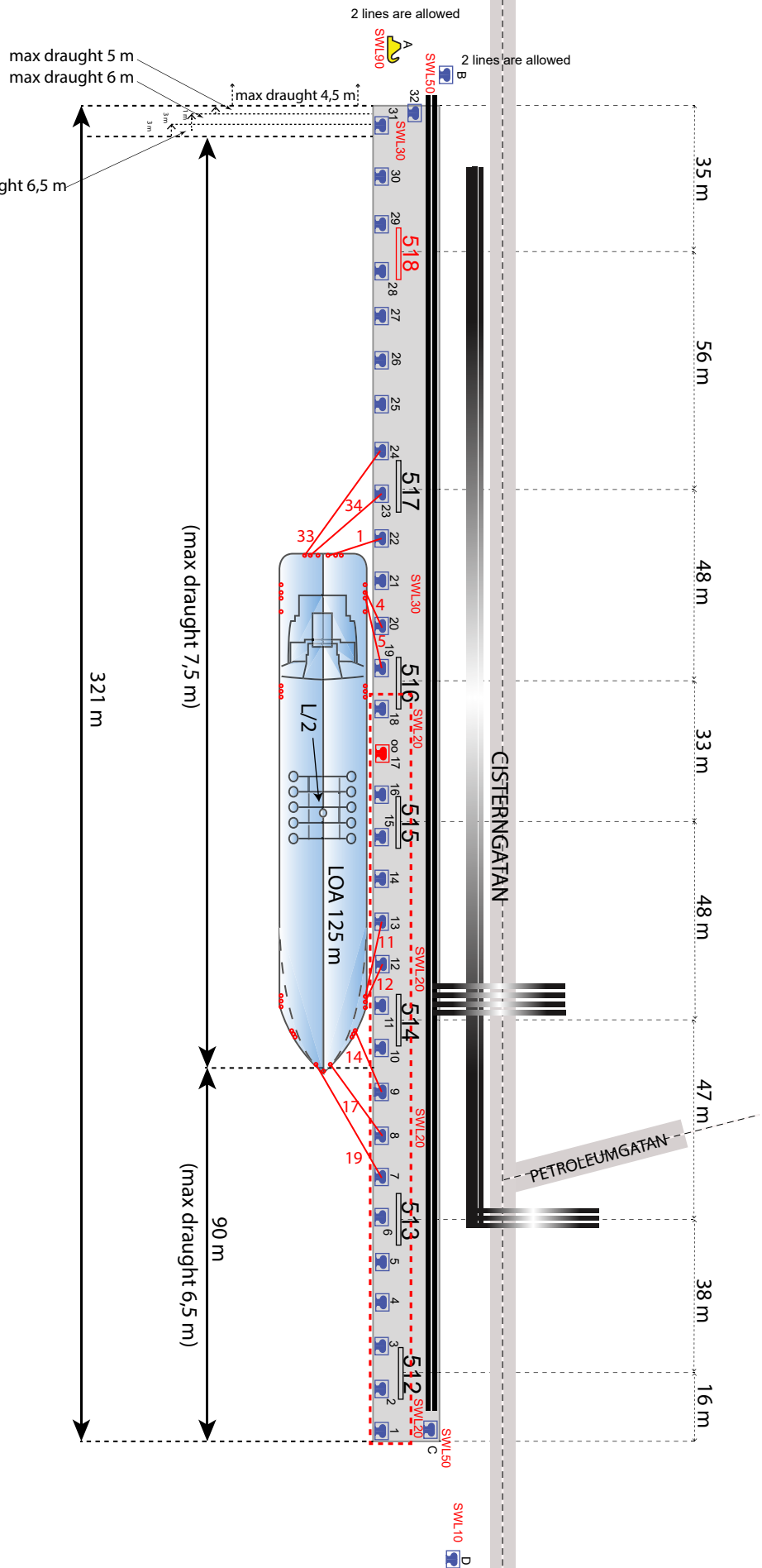
BERTH 515

| | |
|------------------------|-------|
| MAX DRAUGHT (512-514): | 6,5 M |
| MAX DRAUGHT (514-518): | 7,5 M |
| MAX LOA (516-518): | 130 M |
| MAX LOA (515): | 125 M |
| MAX LOA (512-514): | 100 M |
| UKC: | 0.5 M |
| MIN PARALLELL BODY: | N/A |
| QUAY DECK HEIGHT: | 2 M |

No vessel alongside berth 512-518 when the sustained wind speed exceeds 22 m/s, all wind directions.

For berths 515-518, no vessels with LOA > 100 m alongside when the sustained wind speed exceeds 18 m/s, all wind directions”.

Only one mooring line at each bollard is permitted except bollard A and B.



- Loading arm No.
- VRU Connection
- BOLLARD
- HOOK
- CoM** CENTRE of MANIFOLD
- Bollard in red = Out of order

| | | | | | | | |
|--|--------------------------------|---------------------------------------|------------------|------------|--|--------------------------------|-------------------|
| | BERTH DIRECTION 111° / 291° | MOORING PLAN SKARVIK BERTH 515 | | | | BERTH / DRAWING NO BERTH515 | APPROVED BY EW |
| | | REV. DATE 2023-10-20 | DRAWN MAFLOBE | SCALE / | | | |